

## LEAVE YOUR MARK

INSPIRATIONS AND IMPRESSIONS  
FROM OUR TIME.

*-GB Auerbach*

### Show List

—  
**'LEAVE YOUR MARK'**  
33 new pieces from Gregory Auerbach  
Now showing until 2/5/19

**All inquiries:** [info@GBAuerbach.com](mailto:info@GBAuerbach.com)  
**Website:** [www.GBAuerbach.com](http://www.GBAuerbach.com)  
**Print Sales:** [www.GBEditions.com](http://www.GBEditions.com)  
**Phone:** 323.404.5100

**The Arclight Hollywood**  
6360 Sunset Blvd.  
Los Angeles, CA 90028

**Showing Monday - Sunday**  
11 AM - 11PM



## LEAVE YOUR MARK

INSPIRATIONS AND IMPRESSIONS  
FROM OUR TIME, BY GREGORY AUERBACH

ON DISPLAY THROUGH FEBRUARY 5TH, 2019

ZOOM TO VIEW HIGHER RESOLUTION IMAGES

SHOW LIST BEGINS ON NEXT PAGE

All inquiries: [info@GBAuerbach.com](mailto:info@GBAuerbach.com)  
Website: [www.GBAuerbach.com](http://www.GBAuerbach.com)  
Print Sales: [www.GBEditions.com](http://www.GBEditions.com)  
Phone: 323.404.5100



**Prince (2018)**  
75" x 51" x 2"

Spray paint, acrylic, vintage newsprint collage on canvas.

Black wood floater frame.



**McQueen #1 (2018)**  
84" x 67" x 3"

Spray paint, acrylic, vintage newsprint collage on canvas.

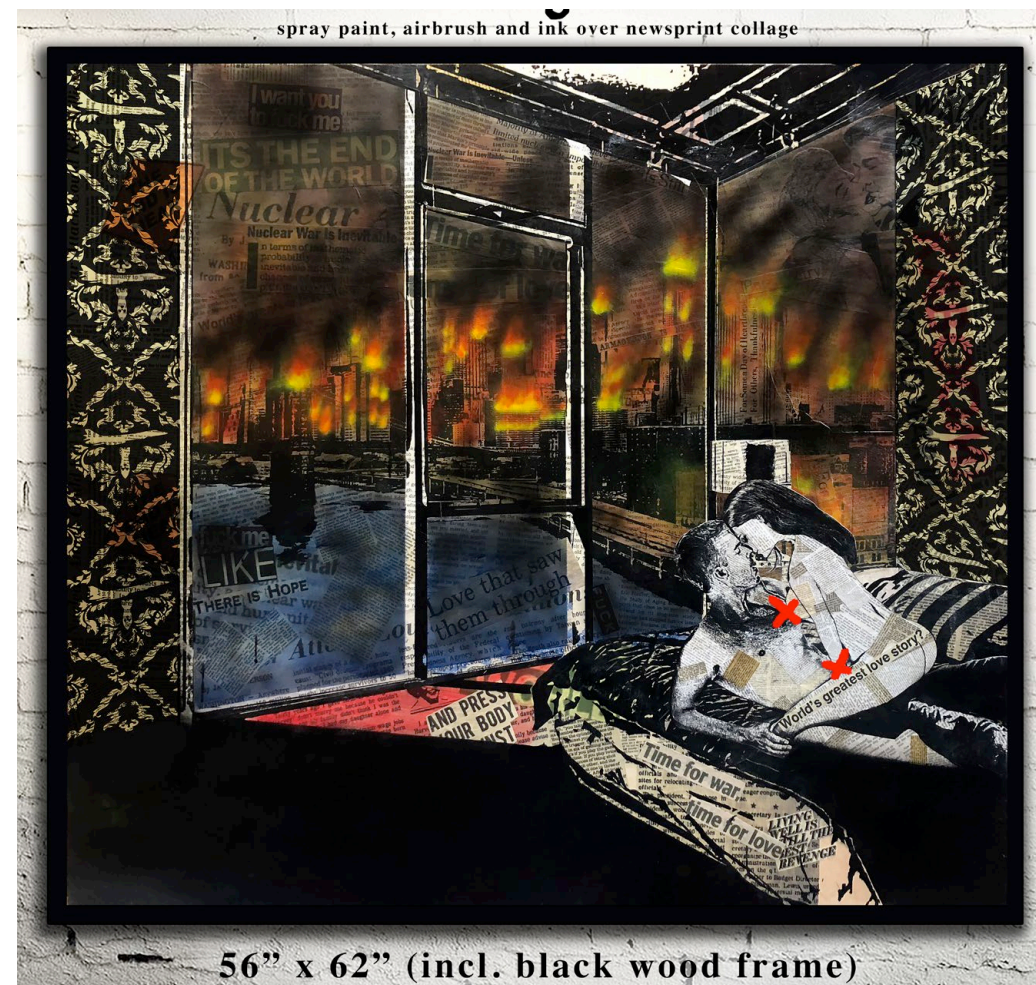
Framing available.



**McQueen #2 (2018)**  
84" x 67" x 3"

Spray paint, acrylic, vintage newsprint collage on canvas.

Framing available.



spray paint, airbrush and ink over newsprint collage

**Love and Armageddon (2018)**  
56" x 62" x 3"

Spray paint, acrylic, airbrush, ink, over vintage newsprint collage on canvas.

Stained oak frame.

56" x 62" (incl. black wood frame)



**Madonna (2016)**  
79" x 63" x 3"

Spray paint, acrylic, steel chain, vintage newsprint collage on canvas.

Hand-ground hot-rolled steel frame.



**James Dean #2 (2018)**

Spray paint, acrylic, ink, over vintage newsprint collage on canvas.

Wood or steel framing available.



**B.I.G. #2 (2018)**  
75" x 50" x 3"

Spray paint, acrylic, gold leaf, over vintage newsprint collage on canvas.

Framing available.



**Lovell /  
The Great Heartbreak (2018)**  
53" x 63" x 3"

Spray paint, acrylic, airbrush. ink, over vintage newsprint collage.

Wood frame

*"The only thing that really hurt, is that she wasn't there to see it with him."*



**Newman #1 (2018)**  
84" x 67" x 3"

Spray paint, acrylic, steel chain, vintage newsprint collage on canvas.

Wood or steel framing available.



**Captain Zissou (2018)**

64" x 52" x 3"

Spray paint, acrylic, ink, over vintage newsprint collage with resin coating.

Stained oak frame.



**McQueen bulletshell table and wall piece (2015)**

64" x 50" x 19.5"

Spray paint, acrylic, and ink over spent shell casings.

Wall mount - Steel frame or no frame

Table - Black walnut table on castors with 1/2" low-iron glass top.

**\*\*HEAVY\*\***

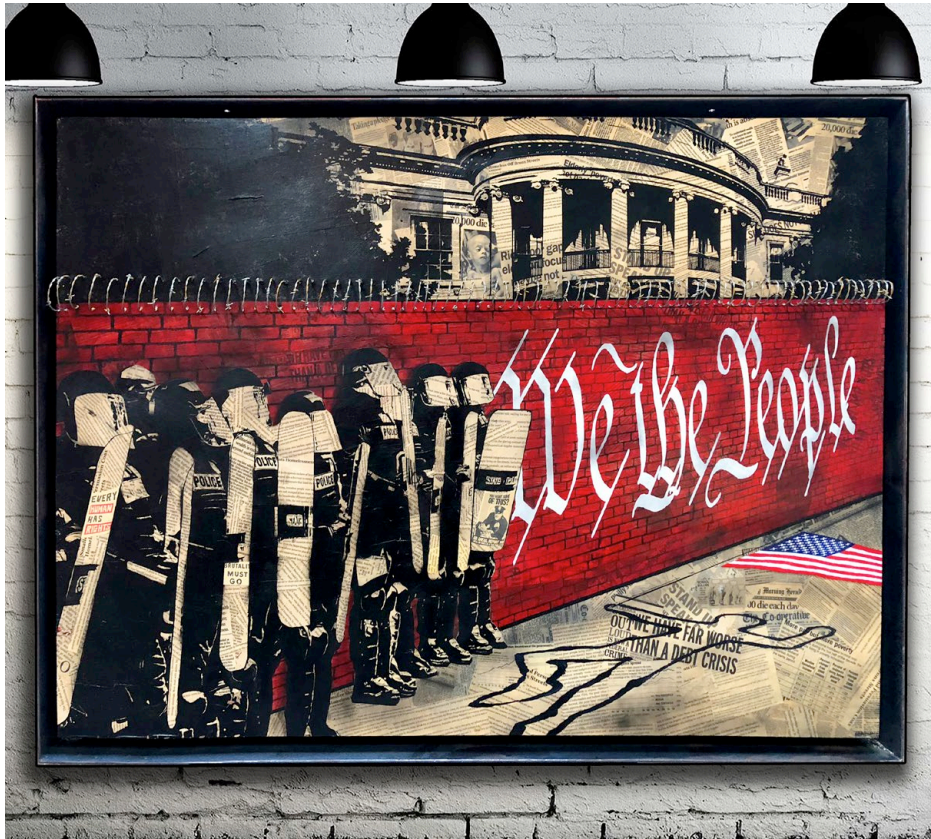


**Kurt Cobain #2 (2018)**

64" x 76" x 3"

Spray paint, acrylic, ink, over vintage newsprint collage.

Steel or wood frame available.v



**A Reason to Riot (2016)**  
52" x 75" x 4

Spray paint, acrylic, ink, barbed wire,  
over vintage newsprint collage on  
canvas.

Hot-rolled steel frame.



**Basquiat #2 (2017)**  
62" x 66" x 3"

Spray paint, acrylic, ink, over vintage  
newsprint collage on canvas.

Wood or steel framing available.



**Standing Up By  
Taking A Knee (2018)**  
58" x 76" x 3"

Spray paint, acrylic, ink, over vintage  
newsprint collage about peaceful  
protests around the world, on canvas.

Wood or steel framing available.



**Vader (2018)**  
61" x 61" x 3"

Spray paint, acrylic, ink, over vintage  
newsprint collage about the galactic  
empire and the rebel forces.

Wood or steel framing available.



**Some Have Prospered (2017)**

Resined pigment print on canvas with spray paint.

Wood or steel framing available.



**Sinatra (2013)**

74" x 50" x 3"

Spray paint, acrylic, ink, over vintage newsprint collage on canvas. Coated in resin.

Wood or steel framing available.



**Dennis Hopper (2017)**  
*king of clubs*

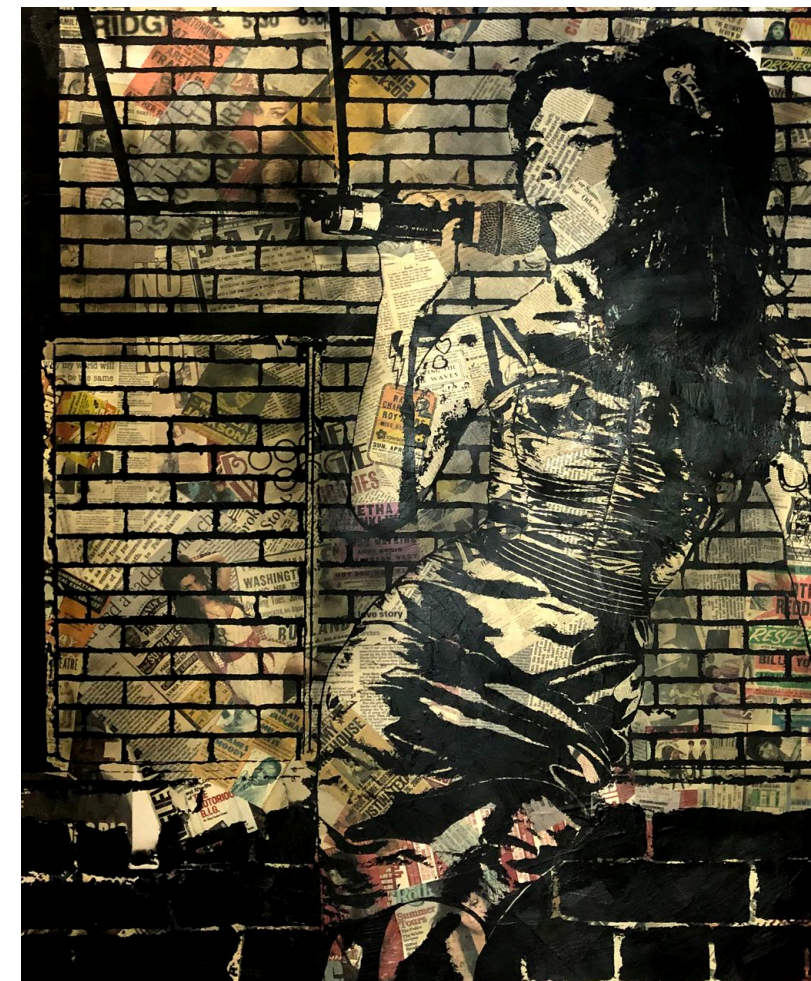
74" x 60" x 3"

Spray paint, acrylic, ink, over vintage newsprint collage

Wood or steel framing available.

King of Hearts - Sold  
King of Diamonds - Sold

Resined pigment print also available.



**Amy (2018)**

74" x 59" x 3"

Spray paint, acrylic, ink, over vintage newsprint collage.

Steel Frame



**Behind the Flag #2 (2016)**

75" x 41" x 3"

Spray paint, acrylic, and ink over spent shell casings.

Wall mount - Steel frame or no frame

Table - Black walnut table on castors with 1/2" low-iron glass top.

**\*\*HEAVY\*\***

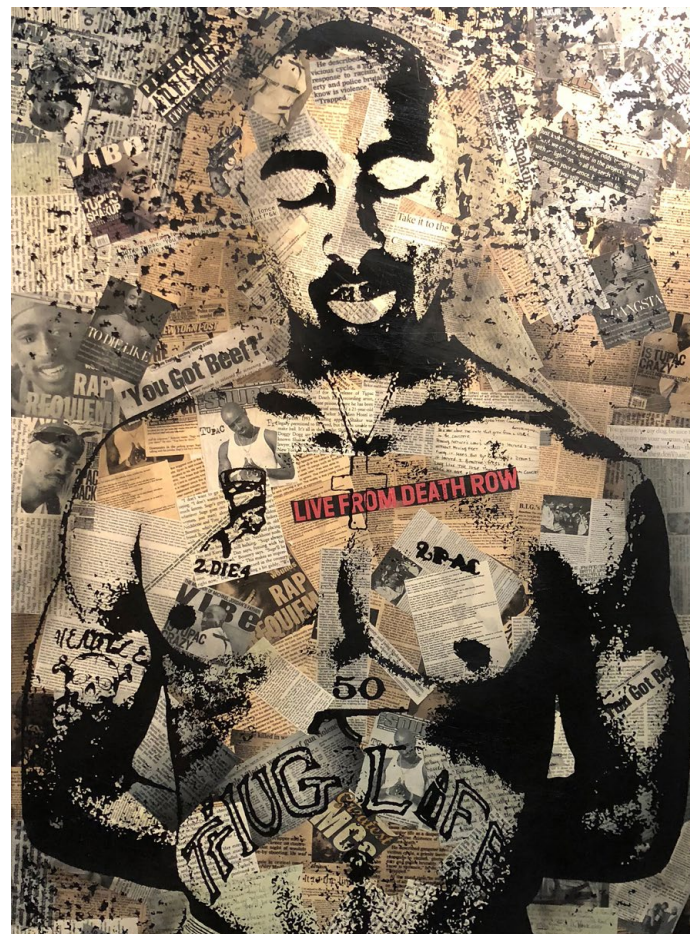


**And Justice For All... (2014)**

49" x 39" x 3"

Spray paint, acrylic, ink, over vintage newsprint collage.

Steel Frame



**Tupac (2017)**  
editioned resined pigment print

72" x 41" x 3"

Resined pigment print on canvas with spraypaint and ink.

Steel or wood frame available



**Dalí (2016)**

48" x 76" x 3"

Spray paint, acrylic, ink, over vintage newsprint collage.

Hot-rolled steel frame.





**Tyranic Times... (2018)**

52" x 64" x 3"

Spray paint, acrylic, ink, airbrush, over vintage newsprint collage.

Stained oak frame

With respect to the growing divide in our country.

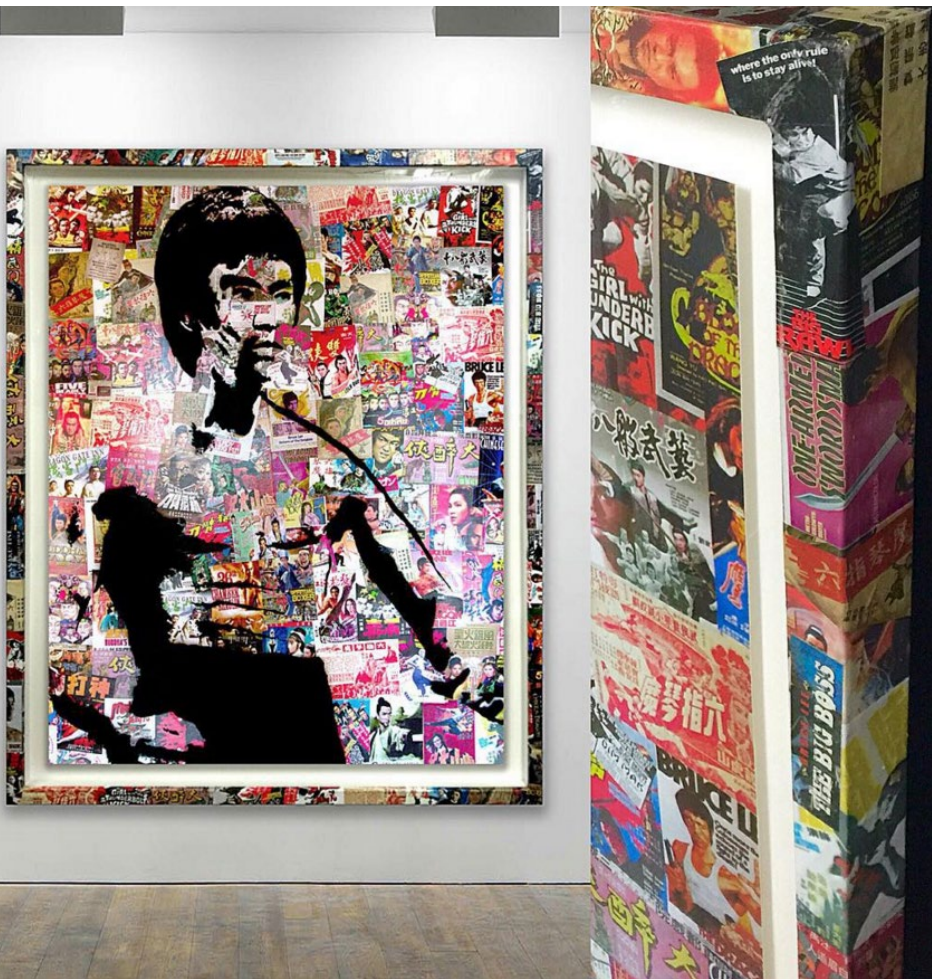


**Lucy (2015)**

48" x 36" x 2"

Spray paint, acrylic, ink, over vintage newsprint collage.

Steel or wood frame available.



**Bruce Lee Large Print (2013)**

62" x 50" x 2"

Pigment print in hand-collaged wood frame



**Dress Rehearsal (2017)**

60" x 48" x 3"

Spray paint, and acrylic over concrete.

Steel or wood frame available.

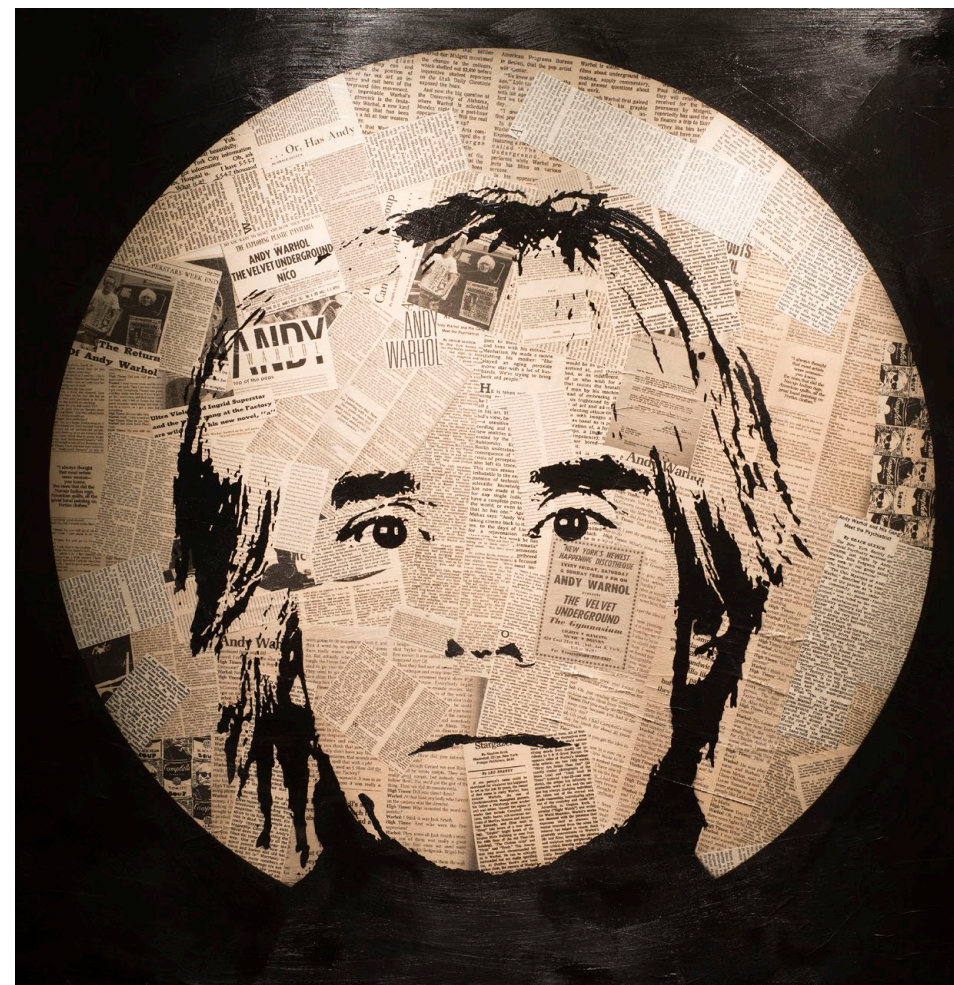


**Audrey (2015)**

74" x 41" x 3"

Resined pigment print on canvas with spray paint.

Cold-rolled steel frame



**Warhol (2015)**

72" x 72" x 3"

Spray paint, acrylic, ink, over vintage newsprint collage with resin.

Cold-rolled steel frame.



**Bowie (2015)**

51" x 81" x 3"

Spray paint, acrylic, ink, over vintage newsprint collage with resin.

Cold-rolled steel frame.



**B.I.G. (2015)**  
resined pigment print on canvas

51" x 65" x 3"

Resined pigment print on canvas with spray paint.

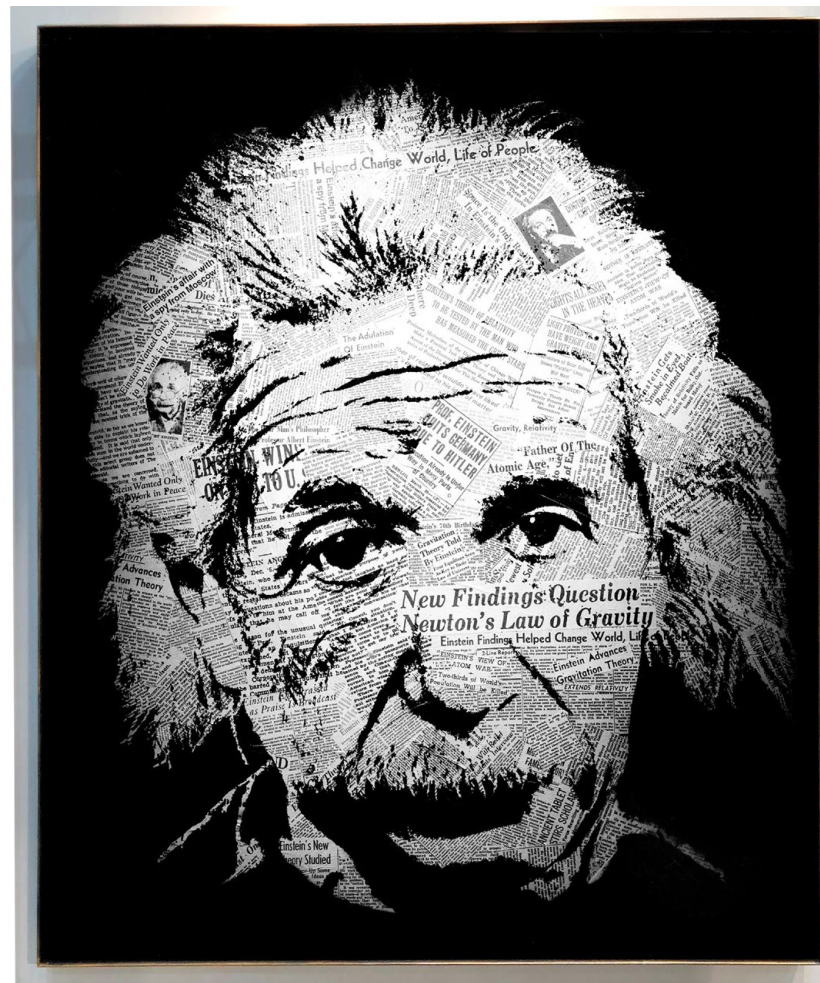
Hot-rolled steel frame.



**Dennis Hopper (2016)**  
*king of hearts*  
resined pigment print on canvas  
60" x 50" x 3"

Spray paint, acrylic, ink, over vintage  
newsprint collage with resin.

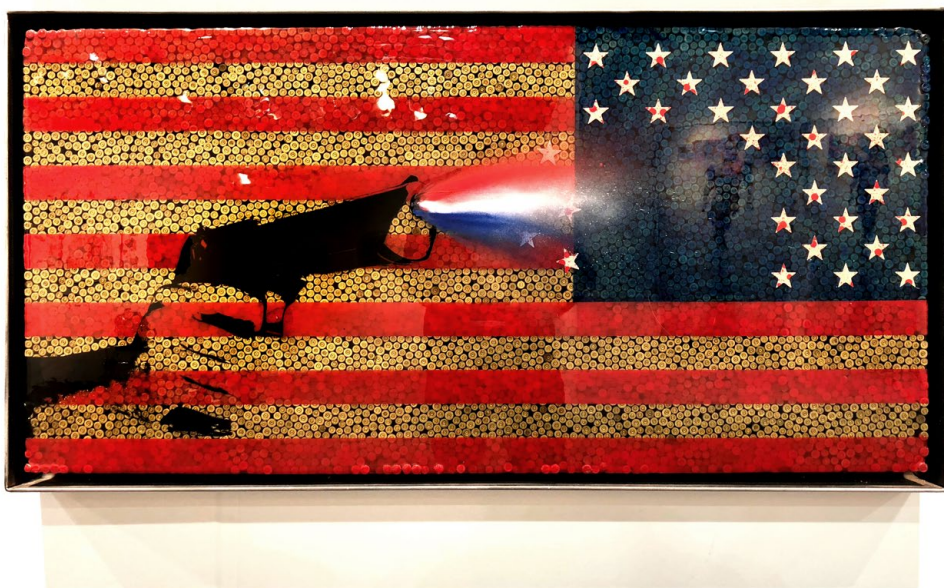
Hot-rolled steel frame available.



**Einstein (2015)**  
resined pigment print on canvas  
58 x 50" x 3"

Spray paint, acrylic, ink, over vintage  
newsprint collage with resin.

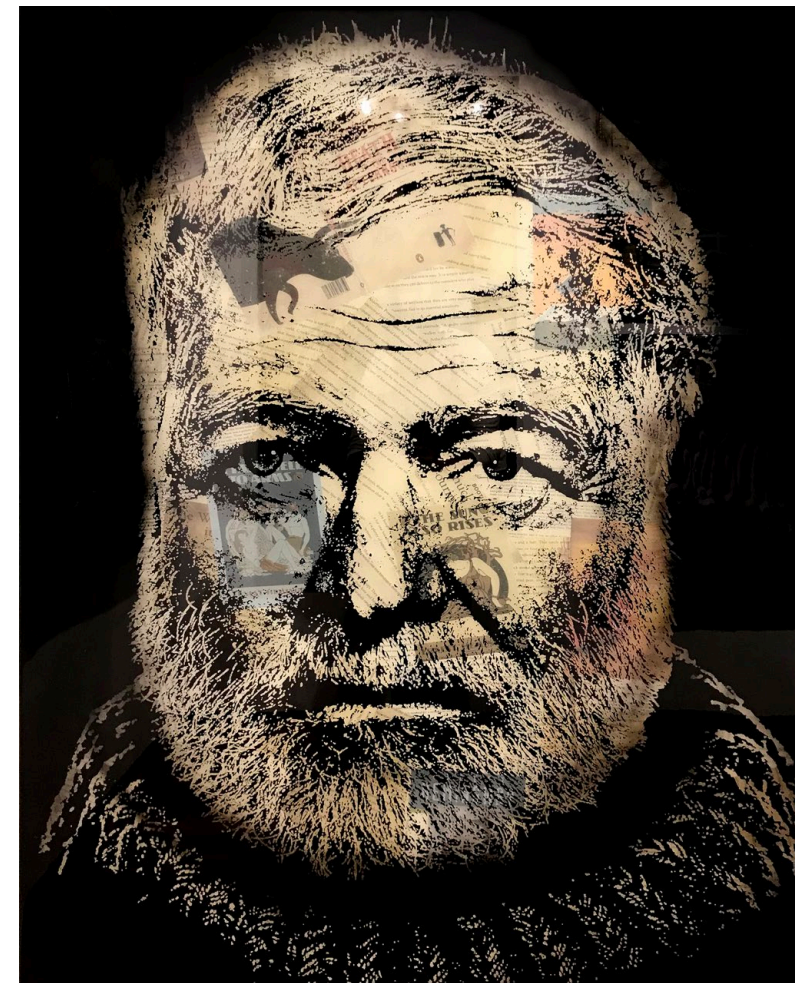
Wood or steel frame available.



**Bowie (2015)**  
25" x 48" x 3"

Spray paint, acrylic, and ink over spent  
shell casings.

Hot-rolled steel frame



**Bowie (2015)**  
resined pigment print on canvas  
58" x 44" x 3"

Spray paint, acrylic, ink, over vintage  
newsprint collage with resin.

Steel or wood frame available.

Partial inventory as of 10/22/18

—

‘LEAVE YOUR MARK’

33 new pieces from Gregory Auerbach

Now showing from 9/25/18 - 2/5/19v



all inquiries: [info@GBAuerbach.com](mailto:info@GBAuerbach.com)

All inquiries: [info@GBAuerbach.com](mailto:info@GBAuerbach.com)  
Website: [www.GBAuerbach.com](http://www.GBAuerbach.com)  
Print Sales: [www.GBEditions.com](http://www.GBEditions.com)  
Phone: 323.404.5100

The Arclight Hollywood  
6360 Sunset Blvd.  
Los Angeles, CA 90028